

Add-On Bucket Option

SOLOMON COLORS



Add-On Bucket Option for Ready Mix and Concrete Products

The ColorSelect® PC Bucket Option can be added to the ColorSelect® PC Liquid Dispensing System to allow customers to weigh color and package it for use at other locations. The colors are selected based on ready mix parameters. Solomon Colors and other colors common in the ready mix industry are listed in drop-down lists. The operator enters the sacks of cement weight per yard and selects how many yards of color to be weighed for each bucket. A 10-yard job can be divided into 5 buckets of 2 yards each. After the job is setup on the computer, control is transferred to the bucket filling station (Bucket Table).

The Bucket Option consists of a 22 x 30 inch stand, control panel and a pneumatic cylinder to raise a bucket lid to cover the bucket being filled. At the weigh chamber a diverter valve automatically turns to send the color by hose to the bucket.

Control at the remote location is simple. A "Ready" light indicates the bucket option has been selected, the parameters have been entered, and the diverter valve has been turned to the bucket table. Pressing the "Fill" button starts the fill cycle. When the color has been weighed the "Fill Complete" light is lit. When the bucket is ready, an operator can press the "Dump" button to discharge the color. The water from the automatic cleaning of the weigh chamber is added to each bucket. The "Ready" light is lit when the dump cycle is complete. Completed buckets are sealed and labeled by the operator. The "Ready" light flashes when the job is complete. The system is ready to start the next job for buckets or ready mix.

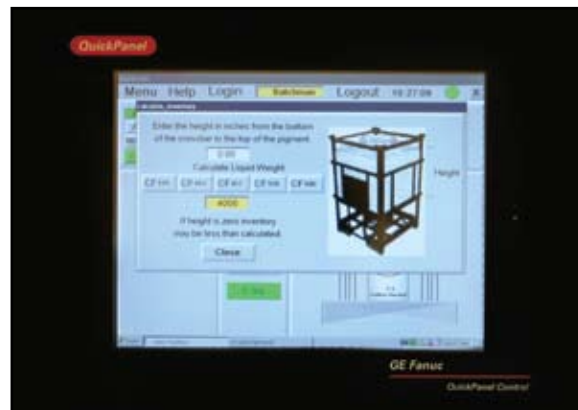
Option 1

- Bucket Option with Lid and Cylinder
- Manual Controls at the stand
- 1-inch Standard Port 3-way valve
- Actuator with Solenoid
- Proximity Switch

Option 2

Includes features of Option 1, *plus*:

- 6-inch Touch Screen to select the color at the Bucket Option
- Serial Printer to print labels at the table



● ● ● Add-On Bucket Option