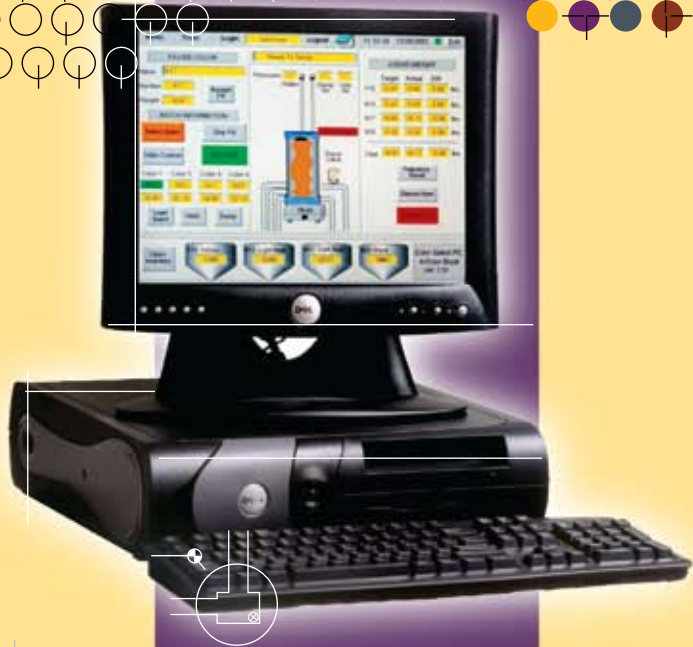
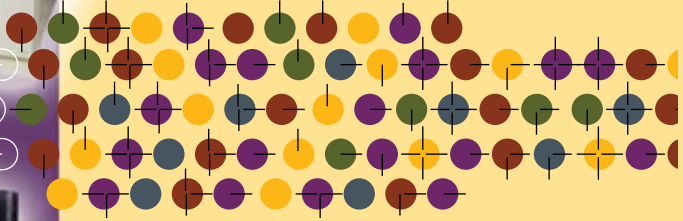
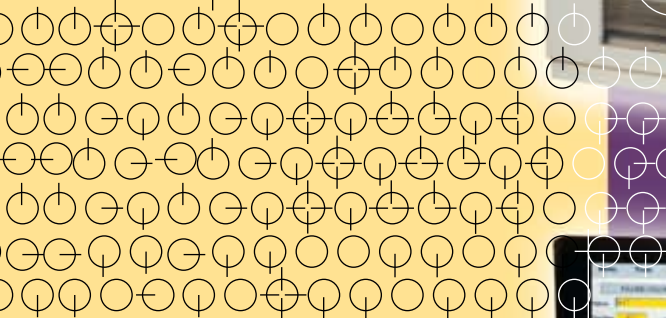
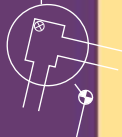




Innovative
Customizable
Solutions



innovative customizable
solutions



Solomon ColorSelect[®] PC Liquid Dispensing System

Concrete Products

SOLOMON COLORS, INC.



E Equipment	P Products	S Solomon
-----------------------	----------------------	---------------------

State-of-the-Art Technology Makes Coloring Concrete Easy... and Profitable.

The increased use of color in concrete products created a demand for better technology and quality control throughout the industry. Solomon Colors responded to that demand by developing the exclusive ColorSelect® PC Liquid Dispensing System.

You can now stock only four primary liquid iron oxide colors... and create hundreds of standard or custom color blends, literally at your fingertips.



WHY CHOOSE SOLOMON COLORS?

More uniform color— No pigment streaks in the final finish

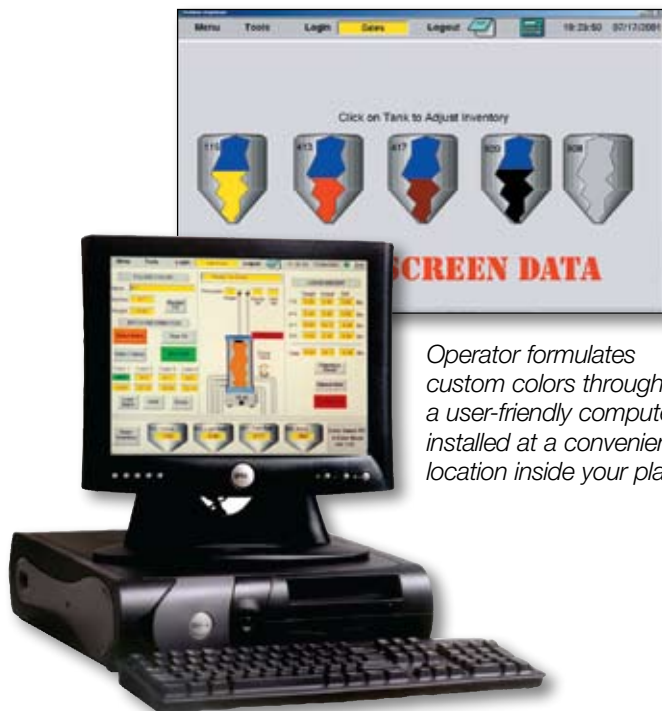
Solomon ColorSelect® PC Dispensing System

The Solomon ColorSelect® System is a fully integrated, automated system designed specifically for concrete producers. It uses state-of-the-art technology in computer controls and motor drives to achieve accuracy and performance never before affordable.

The primary components of the system are a control panel, hose pumps and a weigh cell holding chamber.

Once installed and properly programmed by Solomon Colors technicians, your plant operator will be able to input data through a computer touch screen, using terms that are familiar in the concrete industry.

You can store a virtually unlimited number of formulas in the Solomon ColorSelect® System for instant recall. Adjustments for color, aggregates or cement are quick and easy to make.



Operator formulates custom colors through a user-friendly computer installed at a convenient location inside your plant.

WHY CHOOSE SOLOMON COLORS?

- **Accurate**
- **Dependable**
- **Quick Dispersion**

A large industrial facility, likely a block plant, featuring a prominent yellow weigh chamber and conveyor system. The weigh chamber is a large, cylindrical structure mounted on a yellow metal frame. A conveyor belt system, also yellow, extends from the weigh chamber across the facility. The background shows a large, open industrial space with a corrugated metal wall and a concrete floor. Various pieces of equipment, including a red toolbox and a control panel, are visible in the foreground.

Weigh Chamber

The weigh chamber is installed above the mixer, allowing air/ gravity discharge of liquid color into the mixer.

Overview of typical block plant installation

Accuracy, Efficiency and Control

Once the operator has selected the color(s), the system will precisely measure each component required. Variable-speed motor drives are used to control flow rates on the pumps. As the scale approaches the desired weight, the pumps slow down to allow a precise cut-off.

When activated by the operator, the system will discharge the color in seconds while the weigh chamber is automatically rinsed. Up to four colors can be alternated to produce multi-colored products.



Solomon's storage totes are refilled easily and cleanly by the unique use of stackable bottom-discharge supply totes.

Unique Tote Storage and Delivery System

To eliminate waste that occurs in flat-bottom totes, Solomon Colors developed an exclusive delivery system. The stackable design allows you to transfer product without shutting down production. Product transfer takes less than five minutes, without spilling a drop.

The system's modular design allows flexibility in plant layouts where space is a problem. Hose pumps are placed under the totes.



Solomon's bottom-fill weigh chamber is ready for discharge into the next batch.

WHY SPEC SOLOMON COLORS?

State-of-the-art technology— designed specifically for ready mix producers

Concrete Product Applications

SOLOMON COLORS



Why Choosing Solomon Colors Is Right For You:

The Equipment:

Exclusive ColorSelect® Liquid Dispensing System

- **State-of-the-art technology** — Designed specifically for concrete producers.
- **Convenient and accurate batch control** — Computer-controlled dispensing minimizes human error.
- **Inventory ease and consolidation** — Stock only four primary colors. Eliminate unusable or lost inventory, and reduce shipping costs.
- **Time efficiency** — System loads while batching and mixes with initial mix. Save 15 minutes or more per load of color.
- **Location flexibility** — System can be located up to 50 feet from the mixers, machines and forklift equipment.
- **Reallocation of personnel time** — System requires little attention during operation, allowing you to redistribute manpower to other areas.
- **Quality control** — Permanent computer records of every batch you produce.
- **Cleaner operation** — No direct handling of dry pigment; no batching dust or messy color sheds.
- **Increased safety** — Reduce injuries from lifting heavy bags of dry pigment to upper floors of your plant or onto trucks.

The Service:

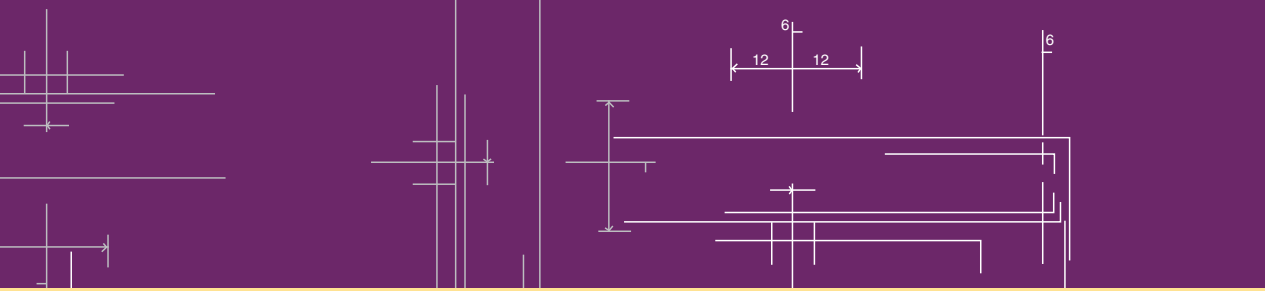
- **We build it, we back it up** — Solomon Colors designs, manufactures, installs plus services our exclusive dispensing products. Bi-annual preventive maintenance is available on all systems.
- **More than just machines** — We custom blend plus manufacture our iron oxide pigments, the best in the industry.
- **One-Stop Shopping** — We have the world's leading dispensing equipment and the best pigment.

The Pigment:

ColorFlo® Liquid Pigments

- **Less Mixing Time** — Faster and more complete dispersion of color.
- **More Uniform Color** — No pigment streaks in the final finish.
- **Customize** — Custom blending and color matching services.

Visit our website at www.solomoncolors.com



World's Leading Iron Oxide Colors for the Concrete Industry

Exclusive Dispensing Systems

Custom-Color Capabilities



Our facility in Rialto, California serves our West Coast customers. At Solomon Colors, we design, manufacture, install and service our liquid dispensing systems, and we make the world's leading concrete coloring products.



Strategically headquartered in the Midwest for over 70 years, Solomon Colors supplies the domestic and international concrete market with millions of pounds of pigment each year.

