

# 5 Reasons to use

**SG SOLOMON**

**UltraFiber  
500®**



# 1. Superb Finishing Quality

Virtually all surface irregularities are eliminated with UltraFiber 500 – no balling, fuzz or blemishes that are common with polypropylene. You get smooth, “hair”-free finishes every time – which also eliminate callbacks, helping you save time and labor.



UltraFiber 500 superior finish

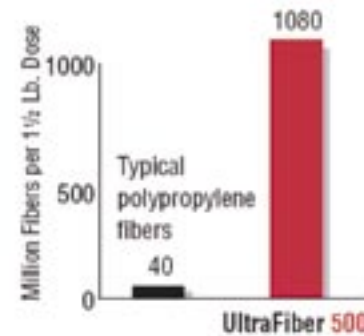


Unsightly balling and fuzz from fibrillated polypropylene

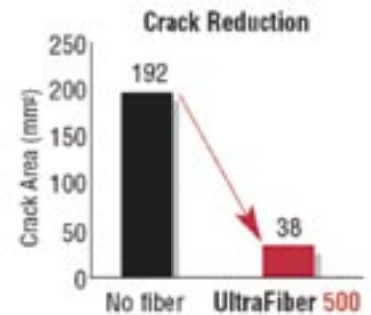


# 2. Unsurpassed Crack Control

Each UltraFiber 500 chip contains over 33,000 individual fibers, which disperse throughout the mix more thoroughly than polypropylene for greater crack-fighting capabilities. And UltraFiber 500-treated concrete yields significantly fewer cracks than concrete without fiber.3. Better Hydration and Bonding The UltraFiber 500 virgin cellulose fiber absorbs moisture that is provided to the cement for improved hydration and bonding. Synthetic fibers actually repel moisture.



UltraFiber 500 has over 1 billion more fibers and 28% more surface area than polypropylene at the same dosage amounts



UltraFiber 500-reinforced concrete results in 85% fewer cracks than concrete without fiber

PLUS, UltraFiber 500 is a better alternative to welded wire mesh and mild temperature steel as secondary reinforcement by providing:

- Reduced plastic shrinkage cracking
- Reduced shrinkage and temperature cracking
- Improved concrete durability
- Lower installed cost
- Safer and faster installations

### 3. Better Hydration and Bonding

The UltraFiber 500 virgin cellulose fiber absorbs moisture that is provided to the cement for improved hydration and bonding. Synthetic fibers actually repel moisture.



**UltraFiber 500**  
readily bonds to cement



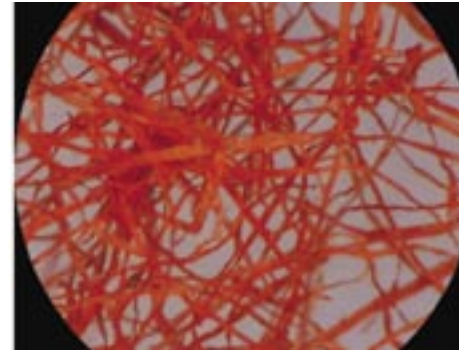
Synthetic fibers exhibit minimal bonding to cement



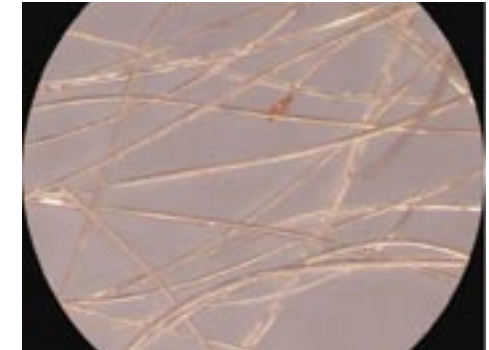
### 4. Great for Colored and Decorative Concrete

#### RICHER COLOR

Unlike polypropylene, dyes and stains are readily accepted by UltraFiber 500. As a result, a wide range of color and options are available with UltraFiber 500-treated concrete – meaning more decorative opportunities for you and higher customer satisfaction.



**UltraFiber 500**  
accepts stains and dyes



Synthetic fibers resist stains and dyes

#### IMPROVED DECORATIVE PROCESS

Both dry and liquid release agents work well with UltraFiber 500 – so stamps, skins and molds release easily, making the decorative process more efficient and hassle-free. UltraFiber 500 helps preserve finish quality in virtually any decorative application

- Virtually invisible
- Enhances scoring and etching
- Compatible with all decorative finishes, including exposed aggregate

PLUS, use with:

- Polished concrete
- Stained concrete



# 5. Automated Dispensing System

Ready-mix plants can gain more advantages in cost savings, safety and quality control by incorporating the UltraFiber 500 System into their operations. The UltraFiber 500 System includes a patented cellulose fiber, outstanding customer and technical service and an automated fiber dispenser – available for NO CAPITAL INVESTMENT. This is the ultimate solution for fiber dispensing and fiber reinforcement.

## RELIABLE AND EFFICIENT DISPENSING

- Motor-driven auger
- Can be integrated into your existing automated batching system
- Compatible with bulk sacks for high-volume loading and increased time savings

## ENHANCED SAFETY

- Eliminates injuries caused by lifting and throwing bags
- No need to climb trucks
- Reduced down time and medical expenses due to loading injuries

## GREATER QUALITY CONTROL

- Fiber amounts are dosed accurately every time
- Batch ticket confirmation on every load
- No more trucks leaving for a job without fiber



# Technical Specifications

## ICC-ES ESR-1032

UltraFiber 500 meets or exceeds ICC acceptance criteria for use in concrete.

## UL CLASSIFIED

UltraFiber 500 is UL-classified with a two-hour fire rating in all D700, D800 & D900 series composite metal deck designs.

## PERFORMANCE PROVEN

Testing by certified independent labs:

- ASTM C 173, Air Content and Unit Weight
- ASTM C 39, Compressive Strength
- ASTM C 78, Flexural Strength
- ICC AC217 - Annex A, Evaluating Plastic Shrinkage Cracking
- ASTM C 666(A), Freeze Thaw
- ASTM C 234, Bond Strength
- ASTM D 6942, Alkaline Stability
- ICC AC217 - Annex B, Evaluating Impact Resistance
- Meets ASTM C1116, Standard Specification for FRC and Shotcrete
- ASTM C 856, Petrographic Examination
- NF EN 13501-2, Resistance to Fire
- Meets ASTM D7357-07, Standard Specification for FRC

## APPLICATIONS

- Commercial Slabs
- Residential Slabs
- Metal Deck Assemblies
- Tilt-Up Panels
- Driveways
- Decorative Concrete
- Curb & Gutter
- Paving
- Sidewalks
- Pool Decks
- Precast

## USAGE RATES

- UltraFiber 500 can be dosed between 1.0 and 3.0 lbs/cubic yard depending on the application.

**800-624-0261**

**[www.ultrafiber500.com](http://www.ultrafiber500.com)**

Solomon Colors Inc.  
4050 Color Plant Road  
Springfield, IL 62702  
Ph: 217-522-3112

Email: [sgs@solomoncolors.com](mailto:sgs@solomoncolors.com)

Web: [www.solomoncolors.com](http://www.solomoncolors.com)

**SGS SOLOMON**  
**UltraFiber**  
**500**

